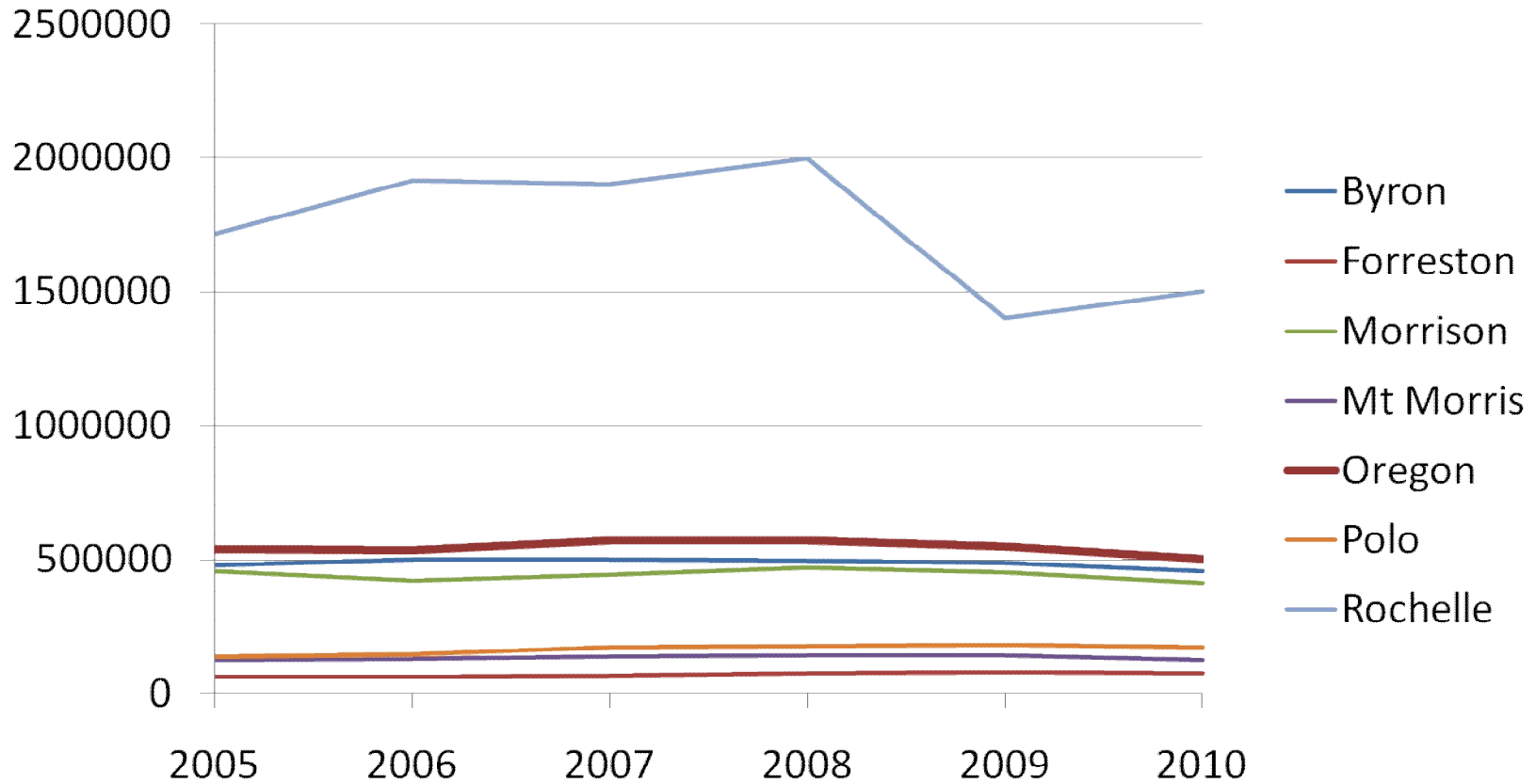


City of Oregon Sales Tax FY 2005-2011

- Of the cities in Ogle County only Rochelle collected more in sales tax**
- The economic downturn reduces revenues county wide**
- Oregon has a significant sales tax increase in the current FY outpacing other similar cities**

Sales Tax Collections FY 2005 – 2010

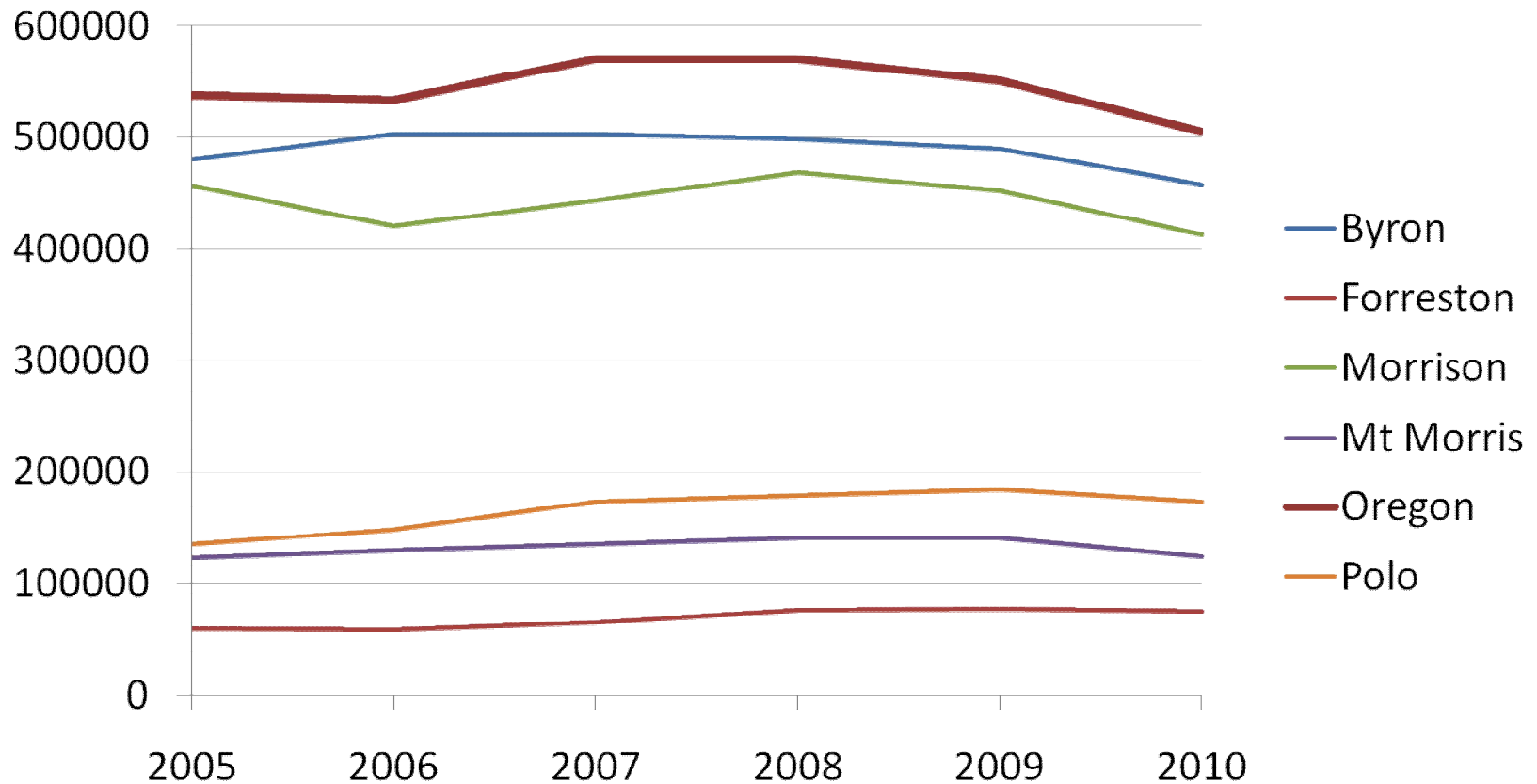
FY = May 1 to April 30 and represents state collections, disbursements to cities follows in 2 mos



Sales Tax Collections

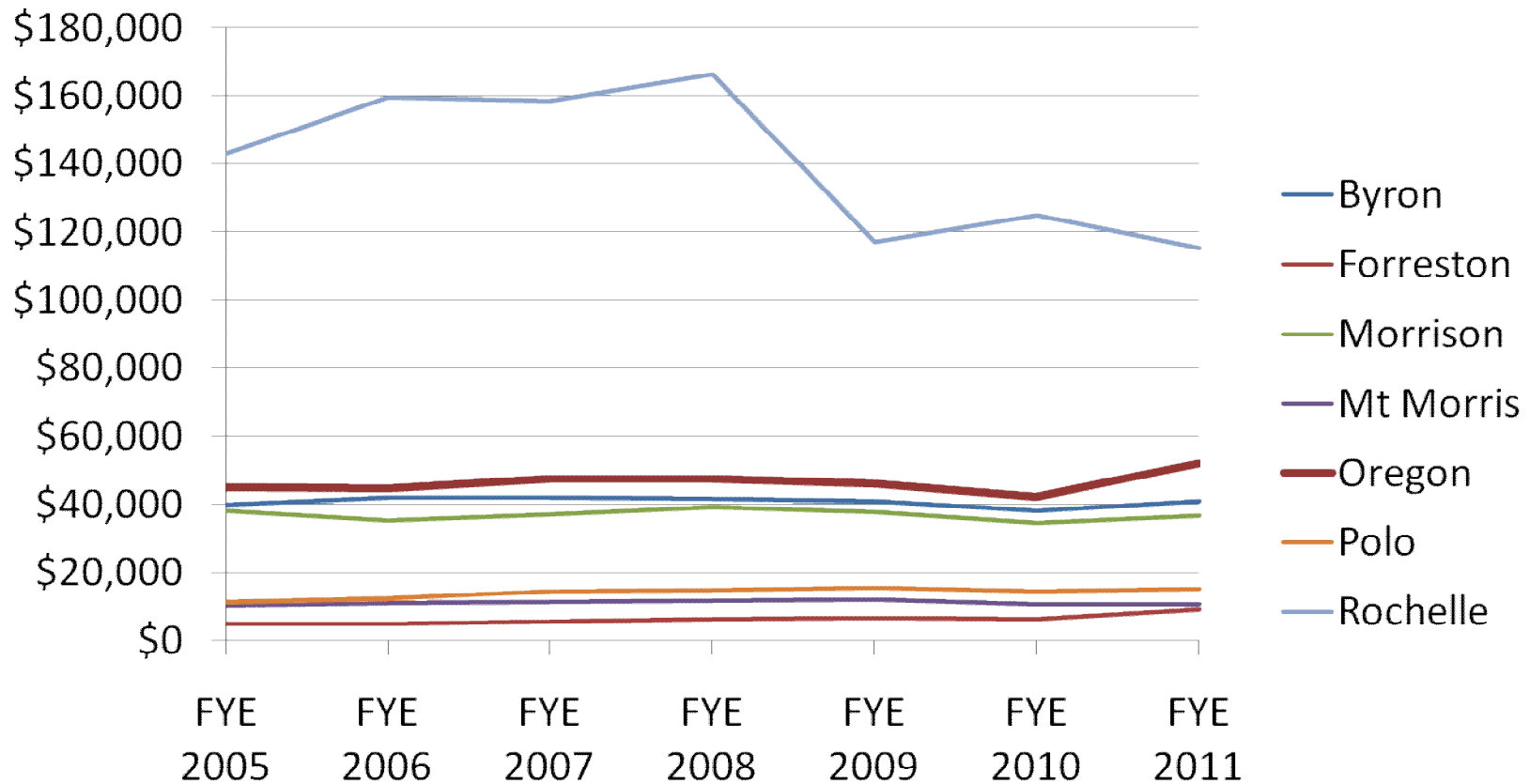
FY 2005 – 2010

FY = May 1 to April 30 and represents state collections, disbursements to cities follows in 2 mos



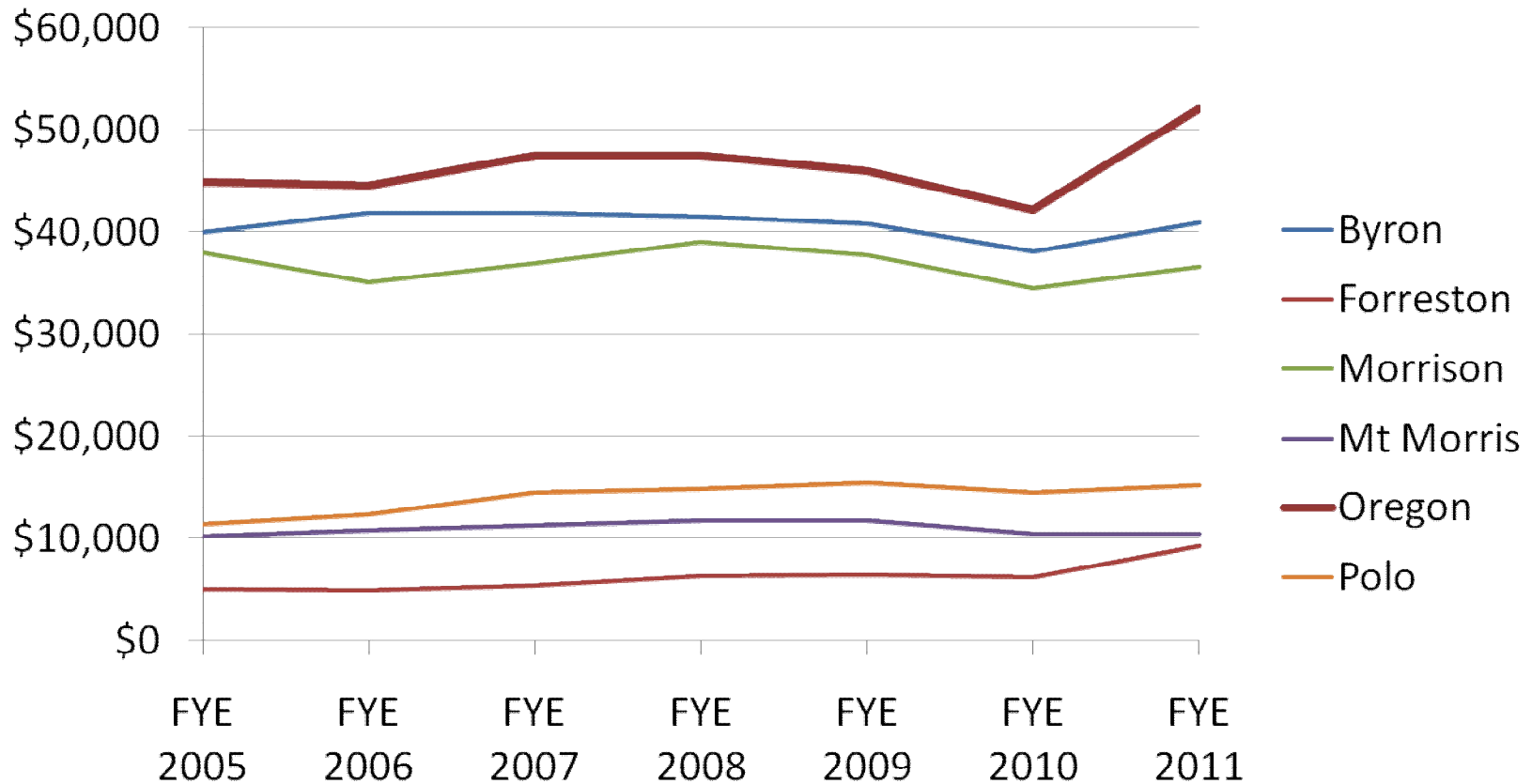
Average Monthly Sales Tax Collections FY 2005 – 2011

FY = May 1 to April 30 and represents state collections, disbursements to cities follows in 2 mos



Average Monthly Sales Tax Collections FY 2005 – 2011

FY = May 1 to April 30 and represents state collections, disbursements to cities follows in 2 mos



% Increase in Sales Tax This Fiscal Year

